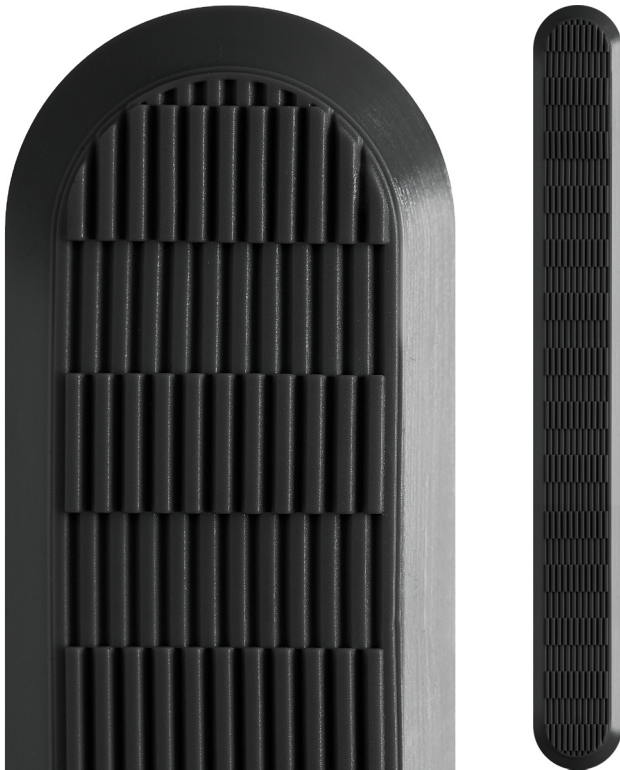


TACTILE CLASSIC BLACK URETHANE



TYPE	Tactile
RANGE	Directional Tactile
DESIGN	Classic
MATERIAL	UV stabilised thermo plastic urethane (TPU)
FINISH	Injection moulded



FEATURES

Injection moulded, undulating groove design on the horizontal face with a smooth outer edge

Not intended for use on ramps with an incline greater than 12.5° (1:8)

Tested for compliance with AS 1428.4

Tested for compliance with the NCC Section D clause 3.8 (TGSIs)

Tested for compliance with slip resistance requirements as detailed in HB 198

Backed by 2 year warranty

SLIP RESISTANCE TESTING

Important information: To determine a classification of a slip resistance rating, see Australian Standards Hand Book 198 (HB 198), an Introductory Guide to Slip Resistance of Pedestrian Materials. This document outlines the minimum ratings of a location and situation of a pedestrian surface.

TEST Wet Pendulum Test — AS 4586 APPENDIX A

FOUR S 96 SLIDER = 50 **CLASS** = P4

TRL 55 SLIDER = 42 **CLASS** = P4

TEST Dry Floor Friction Test — AS 4586 APPENDIX B

MEAN COF = 0.85 **CLASS** = D1

TEST Wet/Barefoot Ramp Test — AS 4586 APPENDIX C

MEAN ANGLE OF INCLINATION = 20° **CLASS** = B

TEST Oil/Wet Ramp Test — AS 4586 APPENDIX D

CORRECTED MEAN OVERALL ACCEPTANCE ANGLE = 20° **CLASS** = R10

LUMINANCE TESTING

Important information: To determine a luminance contrast between a substrate and the DTAC TGSi node, see: AS 1428.4:2009. DTAC can test your substrate for luminance contrast to give you peace of mind that your DTAC project will be fully compliant to AS 1428.4.

TEST Design for Access & Mobility — AS 1428.4 APPENDIX E

LUMINANCE REFLECTANCE RATING / WET = 4.8

LUMINANCE REFLECTANCE RATING / DRY = 5.0

DTAC PTY LTD
ABN 41 093 070 127

Unit 4, 11-12 Phillip Court
Port Melbourne Victoria
Australia 3207

PO Box 5059
South Melbourne Victoria
Australia 3205

T 1300 793 478
F 1300 780 628

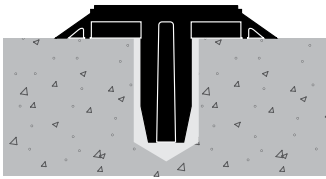
estimating@dtac.com.au
www.dtac.com.au

© DTAC Pty Ltd 2018

TACTILE CLASSIC BLACK

INSTALLATION & APPLICATION

SUBSTRATE Stone / Masonry / Timber / Vinyl

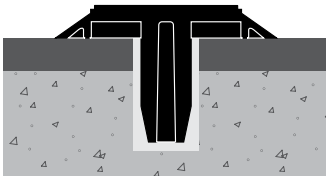


CODE DIRP0705B

FIXING Drill and pressure fit

NOTE Any thick substrate
where maximum hold is
required without chemical
anchoring

SUBSTRATE Vitrified Porcelain / Ceramics / Glass / Metals



CODE DIRP0705B

FIXING Diamond core/pressure fit

NOTE Any thick or thin non
drillable substrate

SIDE PROFILE



SIZE L290 x W35 x H5mm