

Regupol®

Case Study

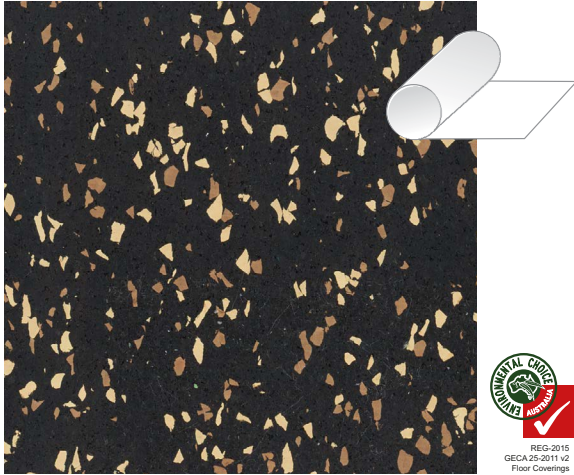
Queensland University of Technology

Creative Industries Precinct - Stage 2



Regupol
Australia

Featured Products



everroll® Tone Kush - Rolls



everroll® Tone Kush - Tiles (600mm x 600mm)



Regupol One Part Multi-Use Flooring Adhesive



Regupol Two Part Polyurethane Adhesive

QUT Creative Industries Precinct

Description of Project:

Queensland University of Technology
Creative Industries Precinct - Stage 2

Objective:

A \$60 million site boasting some of Australia's most sophisticated, high-tech digital facilities, the Creative Industries Precinct at QUT's Kelvin Grove campus is an incubator for the next generation of ground-breaking ideas, emerging and experimental artists and designers, and creative enterprise.

QUT needed in excess of 4,200m² of flooring that would be conducive to the creative needs of its students, be flexible enough to be used throughout the building (including access panels), be easy to maintain, and above all, satisfy the Green Star requirements of the precinct.

Information at a glance:

Location: Gona Parade, Kelwin Grove QLD 4095

Installer: MK Floors QLD Pty Ltd

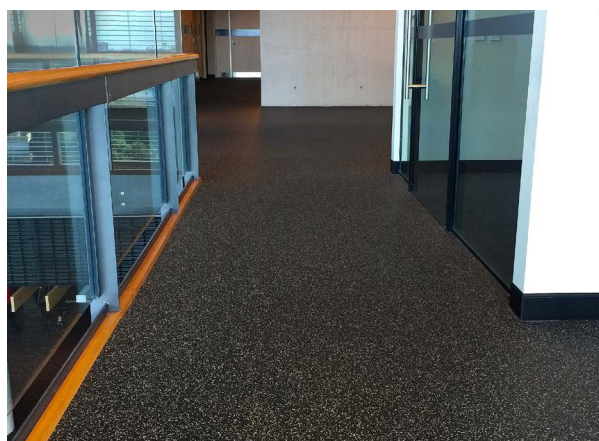
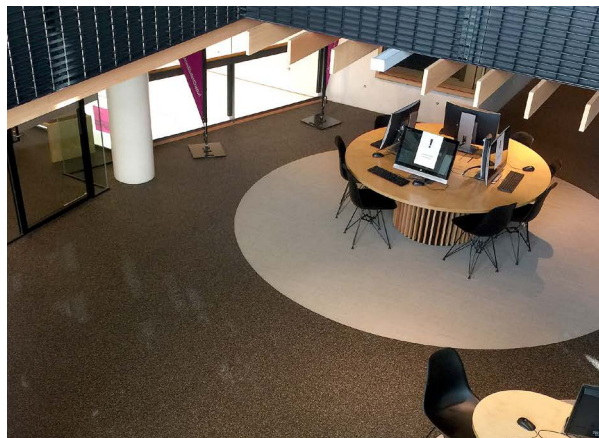
Regupol Products:

everroll® Tone Kush Rolls (3,320m²)

everroll® Tone Kush Tiles (1,211m²)

Regupol One Part Multi-Use Flooring Adhesive

Regupol Two Part Polyurethane Adhesive



Regupol®

QUT Creative Industries Precinct



Regupol (Australia) Pty Ltd

155 Smeaton Grange Road, SMEATON GRANGE NSW 2567

Phone: 02 4624 0050 Fax: 02 4647 4403

Email: sales@regupol.com.au Website: www.regupol.com.au

Online 08.2016MR

